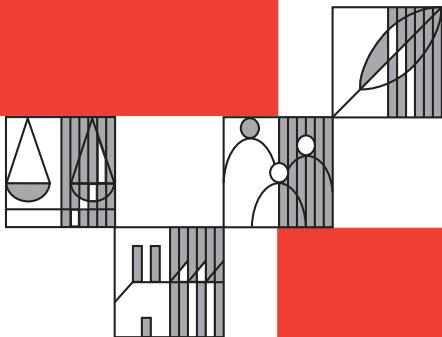


South Tyrol in figures



2004

Autonomous Province
of South Tyrol

Provincial Statistics
Institute



astat

Source of data:

Data was mainly taken from official statistics sources which are partly directly collected by the Provincial Statistics Institute (ASTAT) and partly acquired from various ISTAT publications.

The following public bodies also provided data: Provincial Hydrographic Department, Provincial Hospital Department, Local Education Authority, Bilingual Examination Secretariat, Chamber of Commerce, SIAE, Provincial Employment Office, Provincial Agricultural Division, Provincial Forestry Division, Provincial Department of Industry, ENEL, Provincial Cablecar Department, Telecom, RAI, Banca d'Italia, Autonomous Province of Trento.

ASTAT accepts full responsibility for the data and its evaluation.

© Copyright:

Autonomous Province of South Tyrol
Provincial Statistics Institute - ASTAT

Bozen / Bolzano 2004

Orders are available from:

ASTAT
Viale Duca d'Aosta Allee 59
I-39100 Bozen / Bolzano
Tel. (0471) 414000
Fax (0471) 414008

E-mail: astat@provinz.bz.it
E-mail: astat@provincia.bz.it

Reproduction and reprinting of tables and charts, even partial, is only allowed if the source is cited (title and publisher).

Editor: Speziani Francesca

Translation: Logiudice Sonja

Layout and graphics: Lantschner Raimund
Stauder Renata



Territory and environment

1	Surface area by altitude	6
2	Municipalities grouped by surface area 2003	6
3	Surface area by land use 2000	7
4	Climate 2003	7



Population and society

5	Demographic development in South Tyrol and in its main urban centres 1754-2001	8
6	Surface area, resident population and population density in South Tyrolean districts - 31.12.2003	9
7	Resident population of the municipalities and districts in 2003, 2001 and 1991	10
8	Municipalities and resident population by population size groups - 31.12.2003	14
9	Declarations of which language group belong to/affiliated to - Population Census 2001	15
10	Percentage composition of the three official language groups (based on the declarations made during the Population Census 2001) by municipality	16
11	Resident population by language group according to the Population Censuses from 1880 to 2001	19
12	Natural population change 2001-2003	20
13	Average life expectancy at birth 1997-2001	20
14	Marriages, separations and divorces 2000-2002	21
15	Immigration and emigration by source and destination area 2000	22
16	Households by number of members 1991 and 2003	23
17	Deaths by causes of death 2003	23
18	Hospitals, number and bed utilisation rate 2002	24
19	Legally induced abortions 2000-2002	24
20	Suicides 1998-2002	24
21	Schools: number of classes and enrolled students by teaching language - School year 2002/03	25
22	Resident population aged 14 and over by sex and educational level 1991 and 2001	26
23	Tests of bilingual ability by sex and test level 1978-2002	26



CONTENTS

	Page
24	Cultural events and others 1997-1999 27
25	Numbers employed by activity sector and sex 2003 27
26	Unemployment 2001-2003 28
27	Housing units - Population Census 1981, 1991 and 2001 29
28	Monthly household consumption by category 2002 30



Economy and business

29	Local units and employees by activity sector - 1981, 1991 and 2001 31
30	Inflation rates in Bozen/Bolzano, Trento and Italy 2001-2003 32
31	Use and resources of goods and services 2000-2001 32
32	Gross and net value-added at basic prices and gross domestic product at market prices 2000-2001 33
33	Per capita values of some economic aggregates in South Tyrol and Italy 2000-2001 34
34	Farm holdings and holding surface area by land use 2000 35
35	Farm holdings and livestock population by livestock type 2000 35
36	Agricultural production by crop type 2001-2003 36
37	Wine grape harvest 2002-2003 36
38	Apple and pear harvest by variety 2002-2003 37
39	Forestry production by type of wood and utilisation 2000-2002 38
40	Mining production 2000-2002 38
41	Electricity production and consumption 2001-2002 39
42	Planning permission granted 2000-2002 39
43	Public works 2000-2002 40
44	Retail trade permits according to type of permit 1997-1998 40
45	Accommodation capacity, arrivals and overnight stays 2001-2003 41
46	Traffic network 2002 42
47	Vehicles liable to road tax 2002 42
48	Road accidents and people injured 2000-2002 43
49	Cableways by category 2001-2003 43
50	Telephone connections and television licences 44
51	Deposits, loans and banking counters 2000-2002 44



Public administration and justice

52	Civil servants by administration 2001-2002	45
53	Consolidated expenditure of local public administration by functional classification 1999-2000	46
54	Declared bankruptcies by activity sector 2001-2003	47
55	Protests 2000-2001	47
56	Reported crimes leading to prosecution 2001	47

Charts

1	Demographic development in South Tyrol and in its main urban centres 1869-2001	8
2	Birth rate, mortality rate and marriage rate 1950-2003	21
3	Migration balance by source and destination area 2000	22
4	Students of nursery, primary, lower and upper secondary schools - school years 1970/71-2002/03	25
5	Numbers employed by activity sector and sex 2003	28
6	Agricultural holdings by livestock type 2000	34
7	Apple and pear harvest 2003	37
8	Local administration civil servants 2002	45



Table 1

Surface area by altitude

Altitude (metres above sea level)	Surface area	
	km ²	%
Under 500	292.09	3.9
500 - 700	207.88	2.8
700 - 800	126.05	1.7
800 - 1,000	419.99	5.7
1,000 - 1,200	521.96	7.1
1,200 - 1,500	1,068.76	14.4
Over 1,500	4,763.70	64.4
Total	7,400.43	100.0

Table 2

Municipalities grouped by surface area 2003

SURFACE AREA (km ²)	Number of municipalities	Total surface area km ²
Under 5	6	20.65
5 - 10	3	20.79
10 - 20	14	210.96
20 - 40	28	824.33
40 - 60	21	1,017.72
60 - 100	20	1,536.97
100 - 250	23	3,466.51
Over 250	1	302.50
Total	116	7,400.43



Table 3

Surface area by land use 2000

TYPE OF LAND USE	Surface area	
	km ²	%
Agricultural land in use	2,670	36.1
Forest	2,920	39.5
Agricultural and forest land not in use	145	2.0
Unproductive land	1,665	22.4
Total	7,400	100.0

Source: randomly based on the Census of Agriculture

Table 4

Climate 2003

WEATHER STATIONS	Height above sea level m	Mean air temperature - °C		Rainfall		
		Normal	2003	Normal mm	2003 mm	2003 days
St.Valentin auf der Haide (Graun i.V.) S.Valentino alla Muta (Curon V.)	1,520	4.3	5.6	615.8	521.4	75
Naturns Naturno	554	10.2	11.0	515.3	459.4	61
St.Leonhard in Pass. S.Leonardo in Pass.	644	10.0	10.3	1,050.9	924.2	83
Meran Merano	333	11.3	12.8	708.1	593.0	63
Sterzing Vipiteno	948	7.8	8.8	780.2	729.4	90
St.Magdalena in Gsies S.Maddalena in Casies	1,398	6.5	5.1	865.3	705.0	90
Brixen Bressanone	560	9.7	11.6	675.5	580.0	78
Bozen Bolzano	254	12.2	13.3	719.8	537.8	65



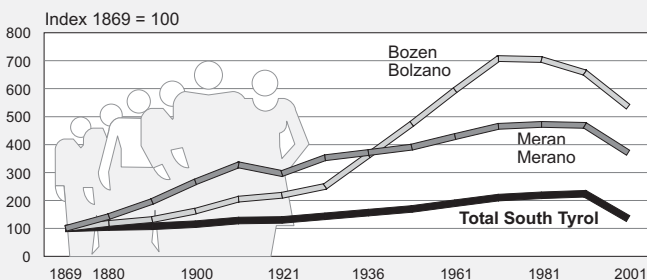
Table 5

Demographic development in South Tyrol and in its main urban centres 1754-2001

YEAR	Total South Tyrol	Bozen Bolzano	Meran Merano	Brixen Bressanone
1754	163,000
1837	183,727	10,499
1869	196,686	14,941	7,142	7,399
1880	205,306	17,441	9,812	7,849
1890	210,285	19,242	13,552	8,534
1900	222,793	23,521	18,544	8,882
1910	251,451	30,424	23,640	10,049
1921	256,610	32,679	21,177	10,424
1931	282,158	37,351	25,196	11,659
1936	298,290	45,505	25,611	11,242
1951	333,900	70,898	27,908	11,797
1961	373,863	88,799	30,614	13,456
1971	414,041	105,757	33,235	16,017
1981	430,568	105,180	33,711	16,101
1991	440,508	98,158	33,504	16,992
2001	462,999	94,989	33,656	18,359

Chart 1

Demographic development in South Tyrol and in its main urban centres 1869-2001



The Brixen index of demographic development corresponds approximately to that for the whole province of South Tyrol

Provincial Statistics Institute - 2004/sr



Table 6

Surface area, resident population and population density in South Tyrolean districts - 31.12.2003

	Surface area km ²	Resident population (a)	Inhabitants per km ²
Districts			
Vinschgau	1,441.68	34,631	24
Val Venosta			
Burggrafenamt	1,100.73	90,695	82
Burgraviato			
Überetsch-Südt. Unterland	423.60	65,820	155
Oltradige-Bassa Atesina			
Bozen	52.34	96,097	1,836
Bolzano			
Salten-Schlern	1,036.63	45,597	44
Salto-Sciliar			
Eisacktal	623.78	45,913	74
Valle Isarco			
Wipptal	650.01	18,092	28
Alta Valle Isarco			
Pustertal	2,071.66	74,792	36
Val Pusteria			
Statistical areas			
Meran-Schlanders	2,530.07	123,715	49
Merano-Silandro			
Bozen	1,588.96	213,230	134
Bolzano			
Brixen-Sterzing	1,320.27	63,062	48
Bressanone-Vipiteno			
Bruneck	1,961.13	71,630	37
Brunico			
Ladin valleys	511.13	18,974	37
Total South Tyrol	7,400.43	471,637	64

(a) Provisional results



Table 7

Resident population of the municipalities and districts in 2003, 2001 and 1991

MUNICIPALITIES	Resident population 31.12.2003	Resident population PC 2001	Resident population PC 1991
Abtei/Badia	3,112	3,015	2,722
Ahrntal/Valle Aurina	5,591	5,517	5,261
Aldein/Aldino	1,659	1,656	1,590
Algund/Lagundo	4,192	4,169	3,841
Altrei/Anterivo	382	387	395
Andrian/Andriano	848	794	758
Auer/Ora	3,185	3,022	2,637
Barbian/Barbiano	1,553	1,520	1,444
Bozen/Bolzano	96,097	94,989	98,158
Branzoll/Bronzolo	2,322	2,293	1,973
Brenner/Brennero	2,062	2,066	2,242
Brixen/Bressanone	18,694	18,359	16,992
Bruneck/Brunico	13,914	13,618	12,624
Burgstall/Postal	1,562	1,435	1,268
Corvara/Corvara i.B.	1,279	1,266	1,236
Deutschnofen/Nova Ponente	3,629	3,565	3,231
Enneberg/Marebbe/Mareo	2,726	2,682	2,574
Eppan a.d.W./Appiano s.s.d.v.	12,972	12,657	10,914
Feldthurns/Velturno	2,579	2,541	2,302
Franzensfeste/Forтеzza	914	892	915
Freienfeld/Campo di Trens	2,566	2,458	2,383
Gais	2,951	2,865	2,537
Gargazon/Gargazzone	1,455	1,366	1,140
Glurns/Glorenza	884	883	795
Graun i.V./Curon V.	2,397	2,379	2,331
Gsies/Valle di Casies	2,126	2,098	2,008
Hafling/Avelengo	719	709	623
Innichen/S.Candido	3,120	3,107	3,073
Jenesien/S.Genesio	2,787	2,703	2,353
Kaltern a.d.W./Caldaro s.s.d.v.	7,075	6,852	6,337
Karneid/Cornedo a.I.	3,162	3,113	2,764
Kastelbell-Tschars/Castelbello-Ciardes	2,321	2,328	2,317
Kastelruth/Castelrotto	6,072	5,994	5,600
Kiens/Chienes	2,657	2,641	2,476
Klausen/Chiusa	4,767	4,613	4,284
Kuens/Caines	331	318	304
Kurtatsch a.d.W./Cortaccia s.s.d.v.	2,131	2,085	1,812
Kurtinig a.d.W./Cortina s.s.d.v.	613	594	552
Laas/Lasa	3,756	3,700	3,514
Lajen/Laion	2,350	2,261	1,945



Table 7 - continued

Resident population of the municipalities and districts in 2003, 2001 and 1991

MUNICIPALITIES	Resident population 31.12.2003	Resident population PC 2001	Resident population PC 1991
Lana	10,069	9,759	8,631
Latsch/Laces	4,938	4,870	4,320
Laurein/Lauregno	364	361	346
Leifers/Laives	15,507	15,069	13,707
Lüsen/Luson	1,480	1,455	1,373
Mals/Malles	4,912	4,835	4,608
Margreid a.d. Weinstr./Magrè s.s.d.v.	1,209	1,181	1,002
Marling/Marlengo	2,245	2,197	2,041
Martell/Martello	889	891	845
Meran/Merano	34,711	33,656	33,504
Mölten/Meltina	1,478	1,447	1,214
Montan/Montagna	1,557	1,480	1,390
Moos i.P./Moso i.P.	2,202	2,170	2,171
Mühlbach/Rio di Pusteria	2,683	2,640	2,410
Mühlwald/Selva dei Molini	1,477	1,455	1,440
Nals/Nalles	1,611	1,577	1,413
Naturns/Naturno	5,138	5,089	4,535
Natz-Schabs/Naz-Sciaves	2,516	2,430	2,051
Neumarkt/Egna	4,515	4,339	4,013
Niederdorf/Villabassa	1,363	1,308	1,229
Olang/Valdaora	2,857	2,797	2,591
Partschins/Parcines	3,287	3,192	2,911
Percha/Perca	1,326	1,313	1,172
Pfalzen/Falzes	2,313	2,255	2,049
Pfatten/Vadena	856	842	707
Pfitsch/Val di Vizze	2,627	2,619	2,508
Plaus	563	547	380
Prad a.S.J./Prato a.S.	3,204	3,140	3,027
Prags/Braies	636	633	613
Prettau/Predoi	617	633	663
Proveis/Proves	283	288	298
Rasen-Antholz/Rasun Anterselva	2,761	2,700	2,506
Ratschings/Racines	4,053	4,010	3,594
Riffian/Rifiano	1,177	1,192	1,048
Ritten/Renon	7,077	6,993	6,101
Rodeneck/Rodengo	1,171	1,157	1,031
Salurn/Salorno	3,040	2,938	2,548
Sand in Taufers/Campo Tures	4,924	4,880	4,436
Sarnthal/Sarentino	6,651	6,620	6,324
Schenna/Scena	2,713	2,677	2,527



Table 7 - continued

Resident population of the municipalities and districts in 2003, 2001 and 1991

MUNICIPALITIES	Resident population 31.12.2003	Resident population PC 2001	Resident population PC 1991
Schlanders/Silandro	5,788	5,733	5,366
Schluderns/Sluderno	1,880	1,848	1,718
Schnals/Senales	1,401	1,394	1,379
Sexten/Sesto	1,918	1,906	1,829
St.Christina i.G./S.Cristina V.G./S.Crestina	1,770	1,738	1,598
St.Leonhard i.P./S.Leonardo i.P.	3,415	3,437	3,330
St.Lorenzen/S.Lorenzo d.S.	3,521	3,438	3,085
St.Martin i.P./S.Martino i.P.	2,899	2,832	2,700
St.Martin i.T./S.Martino i.B./S.Martin de Tor	1,697	1,690	1,495
St.Pankraz/S.Pancrazio	1,594	1,608	1,620
St.Ulrich/Ortisei/Urtijëi	4,562	4,484	4,222
Sterzing/Vipiteno	5,870	5,785	5,596
Stilfs/Stelvio	1,304	1,310	1,323
Taufers im Münstertal/Tubre	957	949	952
Terenten/Terento	1,613	1,572	1,433
Terlan/Terlano	3,763	3,579	3,117
Tiers/Tires	903	884	834
Tirol/Tirolo	2,370	2,356	2,237
Tisens/Tesimo	1,825	1,809	1,721
Toblach/Dobbiaco	3,293	3,240	3,122
Tramin a.d.W./Termeno s.s.d.v.	3,197	3,193	2,963
Truden/Trodèna	989	957	946
Tscherms/Cermes	1,296	1,228	1,118
Ulten/Ultimo	2,991	3,006	2,945
U.L.Frau i.W.-St.Felix/Senale-S.Felice	799	787	709
Vahrn/Varna	3,639	3,577	3,269
Villanders/Villandro	1,836	1,830	1,748
Villnöß/Funes	2,443	2,379	2,309
Vintl/Vandòies	3,162	3,108	2,961
Völs a.S./Fiè a.S.	3,075	3,038	2,649
Vöran/Verano	884	880	795
Waidbruck/Ponte Gardena	202	181	210
Welsberg/Monguelfo	2,581	2,528	2,402
Welschnofen/Nova Levante	1,860	1,825	1,712
Wengen/La Valle/La Val	1,247	1,232	1,199
Wolkenstein i.G./Selva V.G./Sëlva	2,571	2,513	2,394
Total South Tyrol	471,637	462,999	440,508

PC = Population Census



Table 7 - continued

Resident population of the municipalities and districts in 2003, 2001 and 1991

	Resident population 31.12.2003	Resident population PC 2001	Resident population PC 1991
Districts			
Vinschgau			
Val Venosta	34,631	34,260	32,495
Burggrafenamt			
Burggraviato	90,695	88,645	84,156
Überetsch-Südt. Unterland			
Oltradige-Bassa Atesina	65,820	63,918	57,361
Bozen			
Bolzano	96,097	94,989	98,158
Salten-Schlern			
Salto-Sciliar	45,597	44,917	40,996
Eisacktal			
Valle Isarco	45,913	44,943	41,368
Wipptal			
Alta Valle Isarco	18,092	17,830	17,238
Pustertal			
Val Pusteria	74,792	73,497	68,736
Statistical areas			
Meran-Schlanders			
Merano-Silandro	123,715	121,328	115,238
Bozen			
Bolzano	213,230	209,363	201,527
Brixen-Sterzing			
Bressanone-Vipiteno	63,062	61,919	57,968
Bruneck			
Brunico	71,630	70,389	65,775
Ladin valleys	18,974	18,620	17,440
Total South Tyrol	471,637	462,999	440,508

PC = Population Census



Table 8

Municipalities and resident population by population size groups - 31.12.2003

NUMBER OF INHABITANTS	Number of municipalities	Resident population	
		Number	%
Up to - 1,000	20	13,633	2.9
1,000 - 2,000	28	42,598	9.0
2,000 - 3,000	28	70,757	15.0
3,000 - 5,000	25	93,423	19.8
5,000 - 10,000	8	49,262	10.4
10,000 - 20,000	5	71,156	15.1
Meran/Merano	1	34,711	7.4
Bozen/Bolzano	1	96,097	20.4
Total	116	471,637	100.0



Table 9

Declarations of which language group belong to/affiliated to - Population Census 2001

LANGUAGE GROUPS	Declarations of which language group belong to	Declarations of which language group affiliated to	Total Valid Declarations
Absolute values			
Italian	110,206	3,288	113,494
German	290,774	5,687	296,461
Ladin	18,124	612	18,736
Total	419,104	9,587	428,691
Percentage composition by type of declaration			
Italian	97.10	2.90	100.00
German	98.08	1.92	100.00
Ladin	96.73	3.27	100.00
Total	97.76	2.24	100.00
Percentage composition by language group			
Italian	26.30	34.30	26.47
German	69.38	59.32	69.15
Ladin	4.32	6.38	4.37
Total	100.00	100.00	100.00



Table 10

Percentage composition of the three official language groups (based on the declarations made during the Population Census 2001) by municipality

MUNICIPALITIES	Percentage composition		
	Italian	German	Ladin
Abtei/Badia	3.88	2.69	93.43
Ahrntal/Valle Aurina	1.07	98.79	0.13
Aldein/Aldino	1.37	98.38	0.25
Algund/Lagundo	12.93	86.81	0.26
Altrei/Anterivo	8.56	91.44	0.00
Andrian/Andriano	2.55	97.32	0.13
Auer/Ora	29.84	69.91	0.25
Barbian/Barbiano	2.02	97.47	0.51
Bozen/Bolzano	73.00	26.29	0.71
Branzoll/Bronzolo	59.85	39.68	0.47
Brenner/Brennero	20.29	79.39	0.31
Brixen/Bressanone	25.65	73.13	1.23
Bruneck/Brunico	14.91	83.14	1.95
Burgstall/Postal	25.64	73.99	0.37
Corvara/Corvara i.B.	4.42	4.58	91.00
Deutschnofen/Nova Ponente	2.51	97.10	0.39
Enneberg/Marebbe/Mareo	2.75	3.95	93.30
Eppan a.d.W./Appiano s.s.d.v.	12.47	87.16	0.37
Feldthurns/Velturno	0.89	98.56	0.55
Franzensfeste/Forтеzza	40.69	57.82	1.49
Freienfeld/Campo di Trens	3.30	96.22	0.48
Gais	3.09	96.68	0.22
Gargazon/Gargazzone	21.32	78.22	0.46
Glurns/Glorenza	3.37	96.51	0.12
Graun i.V./Curon V.	2.33	97.67	0.00
Gsies/Valle di Casies	1.43	98.47	0.10
Hafling/Avelengo	2.33	97.67	0.00
Innichen/S.Candido	14.78	84.84	0.38
Jenesien/S.Genesio	2.59	97.29	0.12
Kaltern a.d.W./Caldaro s.s.d.v.	6.64	93.06	0.30
Karneid/Comedo a.I.	12.38	87.27	0.34
Kastelbell-Tschars/Castelbello-Ciardes	1.05	98.86	0.09
Kastelruth/Castelrotto	3.43	81.83	14.74
Kiens/Chienes	2.41	96.82	0.77
Klausen/Chiusa	8.29	91.11	0.60
Kuens/Caines	2.90	97.10	0.00
Kurtatsch a.d.W./Cortaccia s.s.d.v.	3.44	96.21	0.35
Kurtinig a.d.W./Cortina s.s.d.v.	30.55	68.92	0.53
Laas/Lasa	2.29	97.54	0.17
Lajen/Laion	5.34	90.82	3.84



Table 10 - continued

Percentage composition of the three official language groups (based on the declarations made during the Population Census 2001) by municipality

MUNICIPALITIES	Percentage composition		
	Italian	German	Ladin
Lana	7.91	91.80	0.29
Latsch/Laces	2.61	97.32	0.07
Laurein/Lauregno	0.28	99.72	0.00
Leifers/Laives	70.42	29.07	0.51
Lüsen/Luson	0.83	98.95	0.23
Mals/Malles V.	3.08	96.83	0.09
Margreid a.d.W./Magrè s.s.d.v.	15.96	83.49	0.56
Marling/Marlengo	11.26	88.50	0.24
Martell/Martello	0.70	99.30	0.00
Meran/Merano	48.01	51.50	0.49
Mölten/Meltina	2.77	97.09	0.15
Montan/Montagna	6.04	93.82	0.15
Moos i.P./Moso i.P.	0.91	99.09	0.00
Mühlbach/Rio di Pusteria	4.03	95.31	0.66
Mühlwald/Selva dei Molini	0.73	99.19	0.07
Nals/Nalles	5.05	94.62	0.33
Naturns/Naturno	2.89	97.07	0.04
Natz-Schabs/Naz-Sciaves	5.39	93.62	0.99
Neumarkt/Egna	37.97	61.65	0.37
Niederdorf/Villabassa	6.68	93.32	0.00
Olang/Valdaora	2.16	97.42	0.42
Partschins/Parcines	2.96	96.97	0.07
Percha/Perca	2.54	96.82	0.64
Pfalzen/Falzes	1.78	97.31	0.91
Pfatten/Vadena	57.09	42.40	0.51
Pfitsch/Val di Vizze	9.29	90.38	0.33
Plaus	0.99	99.01	0.00
Prad a.S.J./Prato a.S.	2.90	96.93	0.17
Prags/Braies	2.79	96.89	0.33
Prettau/Predoi	1.30	98.70	0.00
Proveis/Proves	2.16	97.84	0.00
Rasen-Antholz/Rasun Anterselva	2.31	97.50	0.20
Ratschings/Racines	1.53	98.44	0.03
Riffian/Rifiano	1.08	98.92	0.00
Ritten/Renon	3.77	95.96	0.26
Rodeneck/Rodengo	0.18	99.64	0.18
Salurn/Salorno	62.19	37.43	0.39
Sand in Taufers/Campo Tures	2.94	96.72	0.33
Sarnatal/Sarentino	1.45	98.44	0.11
Schenna/Scena	2.49	97.31	0.20



Table 10 - continued

Percentage composition of the three official language groups (based on the declarations made during the Population Census 2001) by municipality

MUNICIPALITIES	Percentage composition		
	Italian	German	Ladin
Schlanders/Silandro	5.81	94.02	0.17
Schluderns/Sluderno	2.18	97.82	0.00
Schnals/Senales	2.71	97.29	0.00
Sexten/Sesto	3.20	96.58	0.22
St.Christina i.G./S.Cristina V.G./S.Crestina	3.12	5.68	91.20
St.Leonhard i.P./S.Leonardo i.P.	1.61	98.30	0.09
St.Lorenzen/S.Lorenzo d.S.	2.04	96.63	1.34
St.Martin i.P./S.Martino i.P.	1.23	98.74	0.04
St.Martin i.T./S.Mart. i.B./S.Martin de Tor	1.06	1.68	97.27
St.Pankraz/S.Pancrazio	0.13	99.81	0.06
St.Ulrich/Ortisei/Urtijëi	5.55	12.13	82.32
Sterzing/Vipiteno	24.29	75.28	0.44
Stilfs/Stelvio	2.26	97.66	0.08
Taufers im Münstertal/Tubre	4.58	95.42	0.00
Terenten/Terento	0.53	99.41	0.07
Terlan/Terlano	13.09	86.62	0.30
Tiers/Tires	2.35	97.40	0.25
Tirol/Tirolo	2.13	97.69	0.18
Tisens/Tesimo	1.35	98.47	0.18
Toblach/Dobbiaco	13.65	86.28	0.07
Tramin a.d.W./Termeno s.s.d.v.	3.20	96.64	0.17
Truden/Trodèna	20.73	78.58	0.69
Tscherms/Cermes	4.37	95.54	0.09
Ulten/Ultimo	0.85	99.15	0.00
U.L.Frau i.W.-St.Felix/Senale-S.Felice	2.22	97.78	0.00
Vahrn/Varna	11.17	87.86	0.97
Villanders/Villandro	1.37	98.29	0.34
Villnöß/Funes	0.93	98.72	0.35
Vintl/Vandoies	1.89	97.91	0.20
Völs a.S./Fiè a.S.	3.99	95.56	0.45
Vöran/Verano	0.59	98.93	0.47
Waidbruck/Ponte Gardena	8.70	90.68	0.62
Welsberg/Monguelfo	3.81	95.94	0.25
Welschnofen/Nova Levante	3.45	96.19	0.36
Wengen/La Valle/La Val	0.58	1.75	97.67
Wolkenstein i.G./Selva V.G./Sëlva	6.18	5.97	87.84
Total South Tyrol	26.47	69.15	4.37



Table 11

Resident population by language group according to the Population Censuses from 1880 to 2001 (a)

YEAR	Germans	Italians	Ladins	Others (b)	Total
Absolute values					
1880	186,087	6,884	8,822	3,513	205,306
1890	187,100	9,369	8,954	4,862	210,285
1900	197,822	8,916	8,907	7,149	222,794
1910	223,913	7,339	9,429	10,770	251,451
1921	193,271	27,048	9,910	24,506	254,735
1961	232,717	128,271	12,594	281	373,863
1971	260,351	137,759	15,456	475	414,041
1981	279,544	123,695	17,736	9,593	430,568
1991	287,503	116,914	18,434	17,657	440,508
2001	296,461	113,494	18,736	34,308	462,999
Percentage composition					
1880	90.6	3.4	4.3	1.7	100.0
1890	89.0	4.5	4.3	2.3	100.0
1900	88.8	4.0	4.0	3.2	100.0
1910	89.0	2.9	3.8	4.3	100.0
1921	75.9	10.6	3.9	9.6	100.0
1961	62.2	34.3	3.4	0.1	100.0
1971	62.9	33.3	3.7	0.1	100.0
1981	64.9	28.7	4.1	2.2	100.0
1991	65.3	26.5	4.2	4.0	100.0
2001	64.0	24.5	4.0	7.4	100.0

(a) Figures up to 1921 refer to the present population, whereas those of 1961, 1971 and 1981 are based on the resident population and those of 1991 as well as 2001 on the language group declarations. The language analysed up to 1961 is the commonly spoken one, from 1971 to 1981 it was the declaration of which language group they belonged to and in 1991 as well as 2001 the declaration of which language group they belonged to or were affiliated to.

(b) The voice "others" contains different population groups according to the year:
 1880: the "locals" with a different commonly spoken language and the "non locals"; the same is true for 1890 and 1900;
 1910: Italian citizens with a different commonly spoken language and non Italian citizens;
 1921: foreigners;
 1961: all residents with a different commonly spoken language;
 1971: all residents, who did not declare which language group they belonged to;
 1981: resident Italian citizens without any valid language group declaration, as well as resident foreigners;
 1991: invalid declarations, people temporarily absent and resident foreigners; the same applies to 2001

Source: ISTAT, Österreichisches Statistisches Zentralamt, elaborated by ASTAT



Table 12

Natural population change 2001-2003

	2001	2002	2003
Live births	5,469	5,208	5,388
per 1,000 inhabitants			
South Tyrol	11.7	11.1	11.5
Province of Trento	10.4	10.6	10.2
Italy	9.3	9.4
Stillbirths (a)	18	16	16
per 1,000 births			
South Tyrol	3.5	3.2	3.1
Province of Trento	4.0	3.2	2.6
Italy	3.4	3.2
Deaths	3,603	3,657	3,939
per 1,000 inhabitants			
South Tyrol	7.7	7.7	8.4
Province of Trento	9.0	8.9	9.5
Italy	9.7	9.8
Infant deaths within 1st year of life (a)	15	20	14
per 1,000 live births			
South Tyrol	2.9	4.0	2.8
Province of Trento	1.4	1.6	3.0
Italy	4.7	4.5
Marriages (a)	1,912	2,000	1,899
per 1,000 inhabitants			
South Tyrol	4.1	4.3	4.0
Province of Trento	4.1	4.4	4.0
Italy	4.6	4.7

(a) Present population

Table 13

Average life expectancy at birth 1997-2001
Years

	Males	Females
South Tyrol	77.0	83.4
Italy (1999)	76.0	82.1



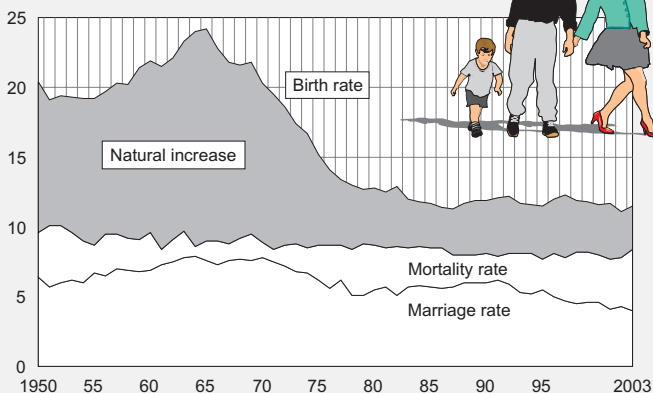
Table 14

Marriages, separations and divorces 2000-2002

	2000	2001	2002
Marriages	2,113	1,912	2,000
Legal separations	523	643	662
per 10,000 inhabitants			
South Tyrol	11.2	13.9	14.2
Province of Trento	14.5	15.0	...
Italy	13.9	13.3	...
Divorces	316	370	341
per 10,000 inhabitants			
South Tyrol	6.8	8.0	7.3
Province of Trento	7.4	7.9	...
Italy	6.8	7.0	...

Chart 2

Birth rate, mortality rate and marriage rate 1950-2003
(per 1,000 inhabitants)



Provincial Statistics Institute - 2004/sr



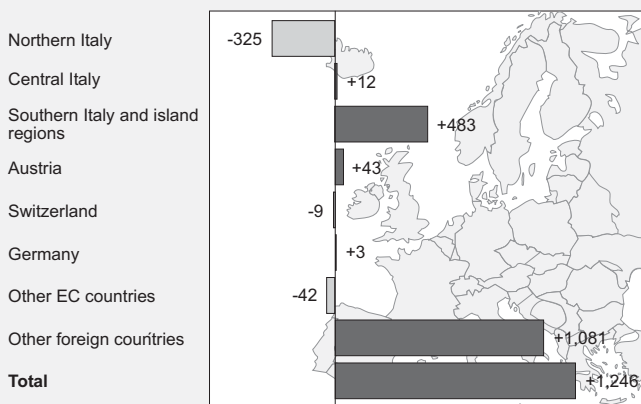
Table 15

Immigration and emigration by source and destination area 2000

SOURCE AND DESTINATION AREA	Immigration	Emigration	Balance
Another South Tyrolean municipality	6,599	6,599	-
Northern Italy (excluding South Tyrol)	878	1,203	- 325
Central Italy	272	260	+ 12
Southern Italy and island regions	791	308	+ 483
Austria	78	35	+ 43
Switzerland	69	78	- 9
Germany	279	276	+ 3
Other EC countries	87	129	- 42
Other foreign countries	1,436	355	+ 1,081
Total	10,489	9,243	+ 1,246
<i>of which from abroad</i>	<i>1,949</i>	<i>873</i>	<i>+ 1,076</i>

Chart 3

Migration balance by source and destination area 2000



Provincial Statistics Institute - 2004/sr



Table 16

Households by number of members 1991 and 2003

№ OF HOUSEHOLDS MEMBERS	PC 1991	31.12.2003	1991-2003 change in %
1	33,385	57,530	+ 72.3
2	31,484	42,065	+ 33.6
3	29,082	32,047	+ 10.2
4	30,364	32,268	+ 6.3
5	13,598	12,520	- 7.9
6	5,199	3,819	- 26.5
7 and over			
- Households	3,816	1,918	- 49.7
- Members	29,747	14,618	- 50.9
Total			
Households	146,928	182,167	+ 24.0
Members	433,986	467,005	+ 7.6

PC = Population Census

Table 17

Deaths by causes of death 2003

DISEASES	Number	%	per 100,000 inhabitants
Infectious and parasite diseases	36	0.9	7.7
Tumours	1,229	30.7	261.8
Psychiatric disorders and those of the nervous system and sensory organs	167	4.2	35.6
Circulatory system diseases	1,661	41.5	353.8
Respiratory system diseases	308	7.7	65.6
Digestive organ diseases	139	3.5	29.6
Other, and badly defined diseases	246	6.1	52.2
Injuries and poisoning	218	5.4	46.4
Total	4,004	100.0	852.8



Table 18

Hospitals, number and bed utilisation rate 2002

	Public	Private	Total
Hospitals	7	7	14
Beds	2,249	452	2,701
<i>per 1,000 inhabitants</i>	4.8	1.0	5.8
Mean utilisation of beds (%)	74.6	73.4	74.4

Table 19

Legally induced abortions 2000-2002

	2000	2001	2002
Number	467	448	495
per 1,000 live births			
South Tyrol	87.4	87.0	95.1
Province of Trento	219.3	214.1	276.2
Italy	225.1	228.8	235.0
Abortion rate (a)			
South Tyrol	4.1	3.9	4.4
Province of Trento	9.9	9.5	12.0
Italy	8.7	8.7	9.0

(a) Abortions per 1,000 women in fertile age (range 15-49 years)

Table 20

Suicides 1998-2002

	1998	1999	2000	2001	2002
Males	45	39	44	47	53
Females	12	12	10	12	7
Total	57	51	54	59	60
per 100,000 inhabitants					
South Tyrol	12.4	11.0	11.6	12.6	12.8
Province of Trento	8.3	7.8	6.7	7.1	8.5
Italy	5.9	5.2	5.4	4.9	5.1



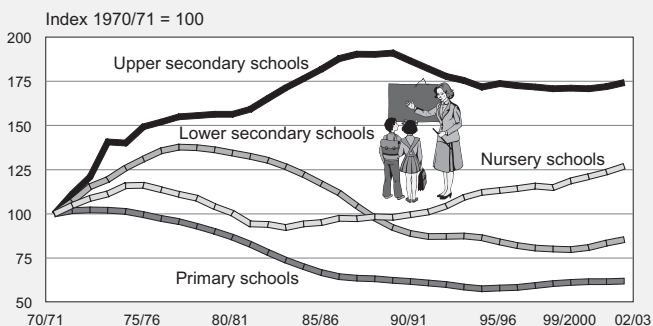
Table 21

Schools: number of classes and enrolled students by teaching language - School year 2002/03

	German	Italian	Ladin	Total
Nursery school				
Enrolments	10,403	3,297	735	14,435
Classes	516	160	35	711
Primary school				
Enrolments	20,453	5,047	1,305	26,805
Classes	1,737	341	96	2,174
Lower secondary school				
Enrolments	12,744	3,167	694	16,605
Classes	655	167	39	861
Upper secondary school				
Enrolments	12,068	4,247	253	16,568
Classes	628	272	22	922

Chart 4

Students of nursery, primary, lower and upper secondary schools - school years 1970/71-2002/03



Provincial Statistics Institute - 2004/sr



Table 22

Resident population aged 14 and over by sex and educational level 1991 and 2001

Percentage composition

	University degree	Upper secondary certificate	Lower secondary certificate	Primary school certificate	Total (a)
Population Census 1991					
Males	4,3	18,3	45,2	30,5	100,0
Females	2,2	20,1	38,4	37,1	100,0
Total	3,2	19,2	41,7	33,9	100,0
Population Census 2001					
Males	5.8	24.6	45.7	22.3	100.0
Females	4.3	28.4	37.4	28.1	100.0
Total	5.0	26.6	41.4	25.3	100.0

(a) The total also includes persons without any qualifications

Table 23

Tests of bilingual ability by sex and test level 1978-2002

	No of candidates who passed		Percentage of candidates who passed (a)	
	2002	1978-2002	2002	1978-2002
Sex				
Males	1,520	46.3
Females	2,401	44.3
Levels				
Level A	1,056	22,082	57.3	34.4
Level B	1,180	33,577	29.8	27.3
Level C	671	45,995	41.9	39.0
Level D	1,014	54,545	78.5	80.7
Total	3,921	156,199	45.1	41.9

(a) Percentage of candidates passing the tests based on total number of candidates



Table 24

Cultural events and others 1997-1999

	1997	1998	1999
Expenditure by spectators (thousands of euro)			
Theatre and music	4,739	4,574	4,212
Cinema	2,518	2,830	2,447
Other leisure	13,966	15,504	17,247
Sports events	1,378	1,718	1,350
Total	22,602	24,625	25,256
Mean expenditure per inhabitant (euro)			
South Tyrol	49.74	53.70	54.77
Province of Trento	35.12	41.26	39.50
Italy	42.97	46.96	49.11
Events			
Prose	1,543	2,101	1,550
Classical music	393	472	475
Pop music	574	536	553
Other	134	176	182
Total	2,644	3,285	2,760
Tickets sold	481,508	471,989	571,727
<i>per event</i>	182	144	207
Cinema activities			
Number of cinemas	41	53	46
Number of days films shown	5,582	5,368	5,174
Tickets sold	466,665	519,818	450,891

Table 25

Numbers employed by activity sector and sex 2003

ACTIVITY SECTORS	Males	Females	Total	%
Agriculture	17,900	8,000	25,900	11.6
Industry	46,800	9,100	55,900	25.0
Services	65,400	76,300	141,700	63.4
Total employed persons	130,000	93,400	223,400	100.0
<i>of which employees</i>	88,000	74,000	162,000	72.5

Source: Labour Force Sample Survey



Table 26

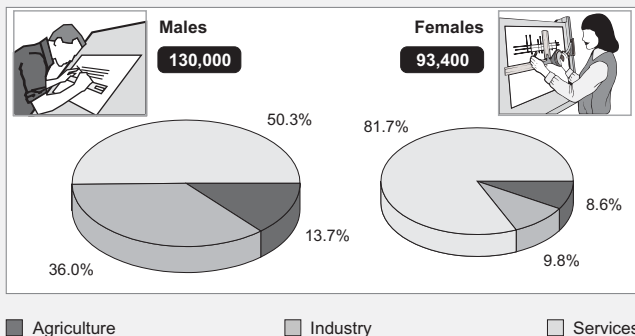
Unemployment 2001-2003
Yearly average

	2001	2002	2003
Job seekers	5,200	5,300	5,900
Males	2,000	2,500	2,500
Females	3,200	2,800	3,500
Unemployment rate (a)	2.3	2.4	2.6
Males	1.6	1.9	1.9
Females	3.4	2.9	3.6
Official unemployed persons	4,812	4,047	4,083
Males	1,943	1,660	1,686
Females	2,869	2,387	2,398

(a) Ratio of job seekers to total labour force

Chart 5

Numbers employed by activity sector and sex 2003
Yearly average - percentage composition



Provincial Statistics Institute - 2004/sr



Table 27

Housing units - Population Census 1981, 1991 and 2001

	Occupied housing units	Other housing units	Other types of dwellings
1981	124,029	18,012	332
1991	144,661	22,012	298
2001 (a)	170,436	23,705	496

Population Census 2001 (a)

Districts

Vinschgau	11,573	1,116	39
Val Venosta			
Burggrafenamt	33,925	4,391	86
Burgraviato			
Überetsch-Südt. Unterland	24,241	2,275	46
Oltradige-Bassa Atesina			
Bozen	40,073	1,389	133
Bolzano			
Salten-Schlern	15,125	5,505	37
Salto-Sciliar			
Eisacktal	15,472	2,049	36
Valle Isarco			
Wipptal	6,203	1,084	26
Alta Valle Isarco			
Pustertal	23,824	5,896	93
Val Pusteria			
Total South Tyrol	170,436	23,705	496

(a) Provisional results



Table 28

Monthly household consumption by category 2002

CATEGORIES OF CONSUMPTION	Average monthly expenditure (euro)		Percentage composition
	by household	by household member	
Food	368.44	138.79	14.9
Non-food consumption	2,098.51	790.53	85.1
Tobacco	16.93	6.38	0.7
Clothing and footwear	176.57	66.52	7.2
Housing	595.40	224.29	24.1
Combustibles and electricity	105.91	39.90	4.3
Furniture, household objects, utensils, domestic services	172.18	64.86	7.0
Medical care	93.30	37.03	4.0
Transport and communications	400.35	150.82	16.2
Recreation, leisure and education	173.55	65.38	7.0
Other commodities and services	359.33	135.36	14.6
Total	2,466.95	929.32	100.0



Table 29

Local units and employees by activity sector - 1981, 1991 and 2001

	1981	1991	2001
Local units			
Agriculture and fishery	130	108	354
Mining	66	63	59
Manufacturing industry	4,254	4,205	4,185
Energy, gas and water	191	150	214
Building	3,417	4,116	4,618
Trade and repairs	9,660	9,109	9,733
Hotel and catering industry	11,810	12,405	11,689
Transport and communications	1,904	1,816	1,889
Banking and insurance	521	776	893
Other services	5,440	9,411	15,392
Total	37,393	42,159	49,031
Employees			
Agriculture and fishery	637	413	349
Mining	555	444	474
Manufacturing industry	31,843	32,711	34,078
Energy, gas and water	1,714	1,619	1,444
Building	16,753	16,565	18,959
Trade and repairs	32,024	33,401	34,048
Hotel and catering industry	31,597	30,143	30,073
Transport and communications	10,303	10,873	9,895
Banking and insurance	3,666	5,022	5,606
Other services	30,896	48,838	63,357
Total	159,988	180,029	198,283



Table 30

Inflation rates in Bozen/Bolzano, Trento and Italy 2001-2003

	2001	2002	2003
Bozen/Bolzano	2.5	3.0	2.5
Trento	2.6	2.4	2.5
Italy	2.7	2.4	2.5

Percentage variation of the mean consumer price index of households of workers and clerks compared to the year before

Table 31

Use and resources of goods and services 2000-2001

At current prices

AGGREGATES	2000	2001	
	Thousands of euro	Thousands of euro	%
Resources			
Gross domestic product at market prices	11,166,390	11,638,100	86.3
Net imports	1,761,546	1,841,671	13.7
Total	12,927,935	13,479,771	100.0
Uses			
Domestic final use	9,926,933	10,411,679	77.2
<i>Households</i>	7,356,120	7,589,388	56.3
<i>Non-profit institutions serving households</i>	54,918	58,083	0.4
<i>General government</i>	2,515,895	2,764,207	20.5
Gross fixed capital formation	2,954,502	3,079,292	22.8
Change in inventories	46,500	-11,200	-0.1
Total	12,927,935	13,479,771	100.0



Table 32

Gross and net value-added at basic prices and gross domestic product at market prices 2000-2001

At current prices

ECONOMIC ACTIVITIES	2000	2001	
	Thousands of euro	Thousands of euro	%
Agriculture and forestry	428,087	489,744	4.2
Industry	2,505,734	2,559,800	22.0
<i>Mining and quarrying</i>	23,960
<i>Manufacturing industry</i>	1,527,194	1,586,405	13.6
<i>Energy supply</i>	153,543
Partial total	1,704,696	1,759,477	15.1
Building	801,038	800,323	6.9
Services	7,345,932	7,728,916	66.4
Sales, hotels, transport	3,177,620	3,300,236	28.4
<i>Hotel and catering industry</i>	1,048,762
Financial intermediation	2,128,491	2,233,648	19.2
Other services	2,039,820	2,195,032	18.9
Gross value-added at basic prices	10,279,752	10,778,461	92.6
(including financial intermediation services indirectly measured)			
Financial intermediation services (to be deducted)	347,162	361,262	3.1
Net value-added at basic prices	9,932,590	10,417,199	89.5
(excluding financial intermediation services indirectly measured)			
Net indirect taxes	1,233,800	1,220,901	10.5
Gross domestic product at market prices	11,166,390	11,638,100	100.0



Table 33

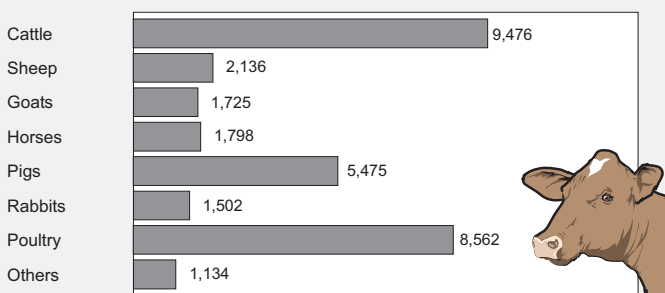
Per capita values of some economic aggregates in South Tyrol and Italy 2000-2001

At current prices (thousands of euro)

	South Tyrol		Italy	
	2000	2001	2000	2001
Gross domestic product at market prices				
per inhabitant	24,071	25,071	20,165	21,187
per full-time equivalent	49,833	51,390	49,576	50,986
Income				
from self-employment by employee full-time equivalent	31,334	32,576	28,834	29,636
from gross operating surplus by self-employed full-time equivalent	71,000	73,652	53,371	55,831
Private consumption				
Total consumption per inhabitant	15,857	16,349	12,307	12,860
of which: <i>food</i>	2,040	2,096	2,076	2,171
<i>housing and related costs</i>	4,298	4,461	3,550	3,711

Chart 6

Agricultural holdings by livestock type 2000



Provincial Statistics Institute - 2004/sr



Table 34

Farm holdings and holding surface area by land use 2000

SOIL USE	Number of holdings	Surface area	
		ha	%
Arable land	3,587	3,780	0.62
Vegetable plots	10,685	220	0.04
Permanent pasture	14,011	73,663	12.08
Grazing	6,397	166,490	27.29
Permanent crops	10,053	23,261	3.81
<i>Fruit trees</i>	8,542	18,326	3.00
<i>Vines</i>	4,781	4,810	0.79
<i>Olive trees, nurseries</i>	56	126	0.02
Total utilised agricultural area	23,280	267,414	43.84
Woods	16,862	292,035	47.87
Non-utilised agricultural area	2,999	14,516	2.38
Other areas	22,838	36,029	5.91
Total	26,285	609,994	100.00

Source: Census of Agriculture

Table 35

Farm holdings and livestock population by livestock type 2000

LIVESTOCK TYPE	Number of holdings	Livestock population	
		Number of animals	Animals per holding
Cattle	9,476	144,196	15
Sheep	2,136	39,739	19
Goats	1,725	15,714	9
Horses	1,798	4,725	3
Pigs	5,475	15,804	3
Rabbits	1,502	27,753	18
Poultry	8,562	250,863	29
Other	1,134	-	-
<i>of which: bees</i>	1,086	(a) 17,095	16

(a) Bee hives

Source: Census of Agriculture



Table 36

Agricultural production by crop type 2001-2003

Quantity in 100 kg

TYPE OF CROP	2001	2002	2003
Agricultural production			
Wheat	2,065	2,030	1,760
Rye (a)	2,280	2,280	2,130
Barley	1,600	1,750	1,750
Oats	930	930	900
Potatoes	138,000	151,800	139,500
Cauliflower	60,300	54,600	41,530
Beetroot	40,700	37,000	32,400
Cabbage	15,550	15,760	15,490
Lettuce	15,800	17,320	9,100
Radicchio	6,400	7,100	6,960
Fruit and vine production			
Apples	9,378,600	9,607,800	8,722,500
Pears	27,155	23,316	24,600
Wine grapes	520,580	479,390	445,200

(a) Including minor cereals

Table 37

Wine grape harvest 2002-2003

	2002	2003	
	Hectolitre	Hectolitre	%
Table wine	10,180	9,899	3.0
Table wine with geographical indication	13,635	11,404	3.4
DOC wine	307,955	313,736	93.6
Total wine	331,810	335,038	100.0
<i>of which: white wine</i>	<i>113,787</i>	<i>124,233</i>	<i>37.1</i>



Table 38

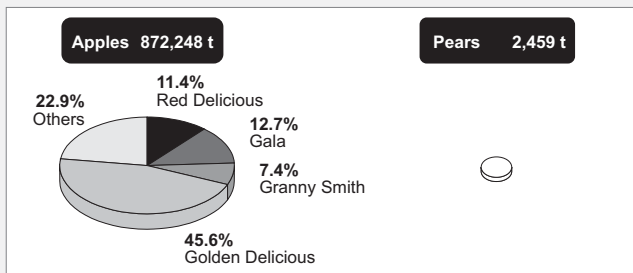
Apple and pear harvest by variety 2002-2003

VARIETIES	2002	2003	
	Production in 100 kg	Production in 100 kg	%
Apples			
Golden Delicious	4,697,104	3,974,523	45.6
Red Delicious	1,071,571	990,241	11.4
Gala	1,044,329	1,111,142	12.7
Granny Smith	698,574	647,718	7.4
Braeburn	546,152	531,189	6.1
Morgenduft	392,881	314,939	3.6
Jonagold	354,747	332,921	3.8
Fuji	191,229	226,269	2.6
Winesap	136,657	122,621	1.4
Idared	119,345	110,033	1.3
Cripps Pink	115,110	155,658	1.8
Elstar	78,378	69,469	0.8
Other	161,717	135,758	1.6
Total	9,607,795	8,722,481	100.0
Pears			
Williams	11,683	13,859	56.4
Kaiser Alexander	9,888	8,625	35.1
Other	1,745	2,106	8.6
Total	23,316	24,589	100.0

Chart 7

Apple and pear harvest 2003

Percentage composition



Provincial Statistics Institute - 2004/sr



Table 39

Forestry production by type of wood and utilisation 2000-2002Production in m³

TYPE OF WOOD	2000	2001	2002
Industrial timber	246,843	333,206	318,518
Fir and spruce	206,142	262,201	258,588
Larch	24,653	45,213	36,760
Pine	15,721	25,591	22,846
Other coniferous wood	132	4	-
Non-coniferous wood	194	197	324
Firewood	159,148	154,566	127,145
Coniferous wood	155,890	149,866	122,426
Non-coniferous wood	3,258	4,700	4,719
Total	405,991	487,772	445,663

Table 40

Mining production 2000-2002

Tonnes

TYPE OF PRODUCT	2000	2001	2002
Porphyry	124,439	185,216	212,140
Marble	368,195	377,450	430,229
Limestone and serpentine			
stone chips	2,200	2,500	8,100
Peat	71,309	65,300	75,485
Sand and gravel	1,334,632	1,766,512	1,561,497
Sandstone	1,000	-	-
Granite	61,820	62,677	35,948
Gneiss	460	680	850
Diorite	34,470	11,267	72,410



Table 41

Electricity production and consumption 2001-2002

	2001	2002	
	Millions of kWh	Millions of kWh	% of Italy
Production	6,001	5,136	1.9
<i>Hydroelectric production</i>	5,973	5,097	10.9
Consumption	2,528	2,600	0.9
Agriculture	164	166	3.4
Industry	1,026	979	0.6
Services	889	962	1.3
Private households	448	493	0.8

Table 42

Planning permission granted 2000-2002

	2000	2001	2002
	Volume in m ³		
Residential buildings	1,479,840	1,734,324	2,010,344
New buildings	1,256,860	1,571,903	1,818,709
Building extensions	222,980	162,421	191,635
Non-residential buildings	3,152,995	3,379,414	4,735,660
New buildings	1,884,088	2,300,853	3,581,575
Building extensions	1,268,907	1,078,561	1,154,085
	Number		
Housing units	2,977	3,505	3,819
In residential buildings	2,647	3,220	3,392
In non-residential buildings	330	285	427
In new buildings	2,443	3,033	3,344
In building extensions	534	472	475



Table 43

Public works 2000-2002

Thousands of euro

	2000	2001	2002
Work started			
Central Government (State)	32,069	21,232
Local Government	607,862	394,952	728,838
Total	639,931	416,184
Work carried out			
Central Government (State)	23,471	21,063
Local Government	512,611	507,423	665,753
Total	536,082	528,486

Table 44

Retail trade permits according to type of permit 1997-1998

	1997	1998
Fixed site	7,158	7,176
Food	1,818	1,815
Textiles	1,336	1,351
Furniture	761	776
Miscellaneous	3,243	3,234
Street trader	1,057	1,051
Food	378	375
Non food	679	676



Table 45

Accommodation capacity, arrivals and overnight stays 2001-2003

	2001	2002	2003
Accommodation facilities (a)			
Hotels	4,478	4,423	4,415
Non hotels (b)	5,565	5,651	5,706
Total	10,043	10,074	10,121
Beds (a)			
Hotels	146,864	146,801	147,297
Non hotels (b)	64,562	64,921	65,507
Total	211,426	211,722	212,804
Arrivals (1,000)			
Hotels	3,597	3,710	3,889
Non hotels (b)	731	743	770
Total	4,328	4,453	4,659
<i>of which foreigners</i>	<i>2,795</i>	<i>2,906</i>	<i>2,884</i>
Overnight stays (1,000)			
Hotels	19,811	20,353	20,716
Non hotels (b)	4,888	4,955	4,961
Total	24,699	25,308	25,677
<i>of which foreigners</i>	<i>16,119</i>	<i>16,709</i>	<i>16,371</i>
Average length of stay (days)			
Hotels	5.5	5.5	5.3
Non hotels (b)	6.7	6.7	6.4
Total	5.7	5.7	5.5
<i>of which foreigners</i>	<i>5.8</i>	<i>5.7</i>	<i>5.7</i>
Utilisation of beds (days)			
Hotels	134.9	138.6	140.6

(a) The number of accommodation facilities and beds refer to the 01.11.

(b) Private lets, youth hostels, campsites, holiday resorts, holiday flats, mountain huts and others



Table 46

Traffic network 2002

RAILWAYS AND ROADS	Length in km
Railways	
State	224
Private	6
Roads	
Motorways	116
State roads	861
Provincial roads	1,202
Municipal roads	5,743

Table 47

Vehicles liable to road tax 2002

TYPE OF VEHICLE	Number	Per 100 inhabitants		
		South Tyrol	Province of Trento	Italy
Cars	241,501	51.7	56.0	58.8
Lorries	30,116	6.4	7.4	6.5
Other trucks	2,482	0.5	0.8	0.4
Motorcycles (a)	31,275	6.7	7.9	7.7
Trailers	9,986	2.1	2.3	1.5

(a) Excluding mopeds



Table 48

Road accidents and people injured 2000-2002

	2000	2001	2002
Accidents	2,074	2,090	2,060
Between 2 or more vehicles	1,415	1,490	1,489
Between vehicles and pedestrians	210	158	150
Single vehicles	449	442	421
People injured	2,783	2,890	2,754
Injuries	2,697	2,793	2,665
Deaths	86	97	89
Accidents per 100 vehicles			
South Tyrol	6.8	6.8	6.5
Province of Trento	5.1	5.2	4.8
Italy	5.2	5.6	5.5

Table 49

Cableways by category 2001-2003

TYPE OF CABLEWAY	2001	2002	2003
Automatic telecabins	79	92	95
Cable cars	23	22	22
Chair lifts, gondulas, cabin lifts	107	105	105
Ski lifts	172	159	153
Other	2	2	2
Total	383	380	377



Table 50

Telephone connections and television licences

	Number	South Tyrol	Prov. of Trento	Italy
Per 100 inhabitants				
Telephones (1999)				
Connections	219,438	47.9	51.0	45.4
Per 100 households				
Television (2003)				
Licences	135,023	78.1	80.7	75.7

Table 51

Deposits, loans and banking counters 2000-2002

Values in thousands of euro

	2000	2001	2002
Deposits	5,583	5,978	6,626
At banks			
National banks	324	332	344
Regional banks	304	348	349
Interprovincial banks	1,079	1,110	1,176
Provincial banks	3,864	4,153	4,673
<i>of which local</i>	<i>1,511</i>	<i>1,662</i>	<i>1,926</i>
Loans	9,689	11,054	12,621
Bank counters	400	407	405
Municipalities with banking counters	111	111	111



Table 52

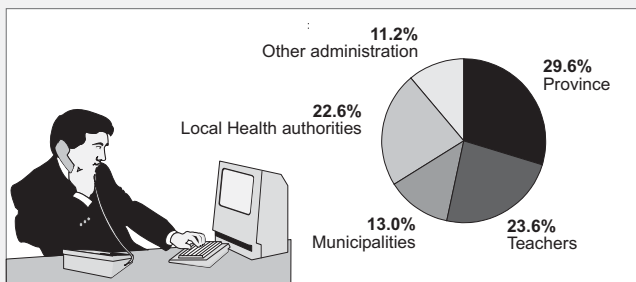
Civil servants by administration 2001-2002

ADMINISTRATION	2001	2002
Government		
Ministries	5,327	5,304
Social insurance institutions	400	408
ACI (Italian Automobile Association)	35	34
Railway company	936	909
Post office	1,355	1,268
Local administration (a)		
Regional administration and Regional Parliament	269	289
Provincial administration and Provincial Parliament	9,015	9,119
Independent provincial administrations	202	200
Teachers	7,887	7,421
Local Health Authorities	7,080	7,088
Municipalities	4,112	4,083
Public assistance institutions	1,160	1,226
Districts (b)	1,729	1,843
Other local administrations	159	158

(a) Local administration employees are expressed in full-time equivalents

(b) Including Independent Social Services Dept. of Bozen/Bolzano

Chart 8

Local administration civil servants (a) 2002

(a) Local administration employees are expressed in full-time equivalents

Provincial Statistics Institute - 2004/sr



Table 53

Consolidated expenditure of local public administration by functional classification 1999-2000

Cash expenditure in thousands of euro

	1999	2000	% change
General administration	387,624	378,204	-2.4
Defence, public security and justice	60,912	66,587	+9.3
Education, culture, sports and leisure	981,499	1,079,628	+10.0
Building and urbanism	252,541	282,369	+11.8
Health care	954,970	1,134,280	+18.8
Social assistance	232,630	249,730	+7.4
Other social measures	88,776	58,987	-33.6
Public transport	81,681	93,563	+14.5
Roads	165,057	239,191	+44.9
Agriculture	177,208	199,297	+12.5
Energy, mining, industry	165,800	217,058	+30.9
Handicrafts	43,123	43,036	-0.2
Tourism	53,089	57,081	+7.5
Trade	38,669	27,540	-28.8
Other economic measures	83,252	92,742	+11.4
Waste and sewage disposal	202,356	196,892	-2.7
Environmental care	18,629	20,499	+10.0
Other public construction	39,789	37,613	-5.5
Other non assignable expenditure	79,963	87,989	+14.3
Total	4,104,568	4,562,284	+11.2



Table 54

Declared bankruptcies by activity sector 2001-2003

ACTIVITY SECTOR	2001	2002	2003
Manufacturing	9	6	4
Building	15	9	10
Trade	18	17	19
Hotels and catering	9	13	14
Other services	13	12	7
Total	64	57	54
<i>of which: companies</i>	59	52	52

Table 55

Protests 2000-2001

	Number		Total (thousands of euro)	
	2000	2001	2000	2001
Bills of exchange	1,942	1,914	2,910	3,106
Drafts	383	267	476	384
Cheques	452	449	2,190	1,944
Total	2,777	2,630	5,577	5,434
per 1,000 inhabitants				
South Tyrol	6	6	12	12
Italy	36	33	62	62

Table 56

Reported crimes leading to prosecution 2001

TYPE OF CRIME	Number	%
Against the person	1,344	8.4
Against the family and public morals	111	0.7
Against property	11,992	74.9
Against economic order	1,468	9.2
Other crimes	1,092	6.8
Total	16,007	100.0
<i>of which: by unknown offenders</i>	12,240	76.5